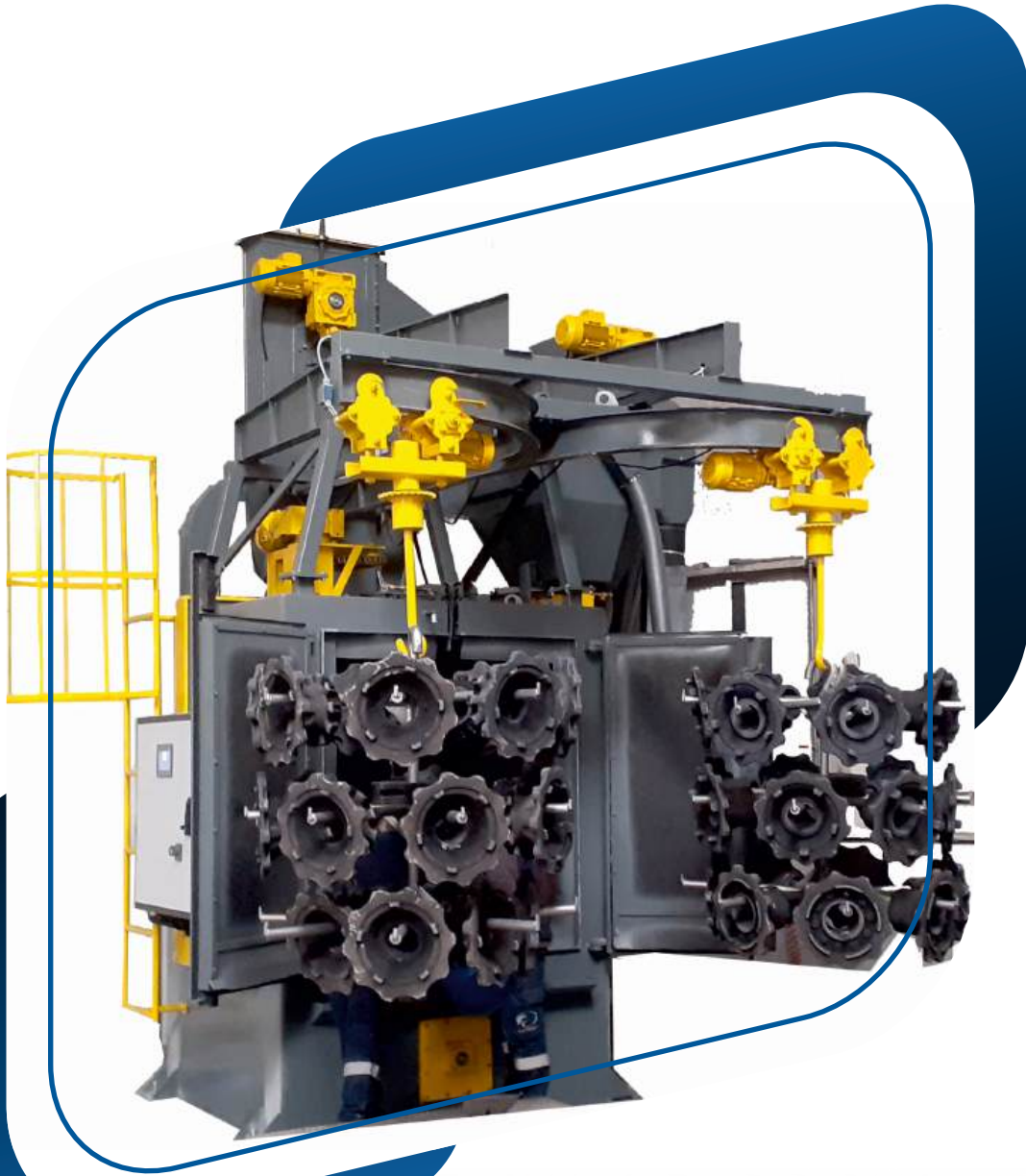



CATALOG



**YILDIRIM**
Shot blasting Machinery

SHEET METAL TUNNEL TYPE



SHEET METAL AND PROFILE SHOT BLASTING MACHINES

| MACHINE CODE | TUNNEL ENTRANCE DIMENSIONS WxH (mm) | TURBINE (Quantity x Diameter) |
|--------------|-------------------------------------|-------------------------------|
| YT1 | 1000 X 500 | 4X Ø 400 |
| YT2 | 1500 X 500 | 6X Ø 400 |
| YT3 | 1500 X 1000 | 6X Ø 400 |

Upon your request, machines of any size can be designed and manufactured.





HANGER TYPE SHOTBLASTING MACHINE

| MACHINE CODE | BASKET DIAMETER (Ø) | Basket workpiece (H) MAX | KG CAPACITY | TURBINE (QUANTITY X DIAMETER) |
|--------------|---------------------|-----------------------------|-------------|----------------------------------|
| YAK0 | 800 | 900 | 500 | 2 X Ø320 |
| YAK1 | 1200 | 1200 | 1000 | 2 X Ø380 |
| YAK2 | 1200 | 1500 | 1000 | 2 X Ø380 |
| YAK3 | 1500 | 2000 | 2000 | 2 X Ø380 |
| YAK4 | 1800 | 2400 | 2500 | 3 X Ø400 |
| YAK5 | 2000 | 3000 | 2500 | 4 X Ø400 |
| YAK6 | 2500 | 4000 | 3000 | 6 X Ø400 |

Upon your request, machines of any size can be designed and manufactured





TUMBLAST SHOT BLASTING MACHINE

| MACHINE CODE | DRUM DIAMETER | LOAD CAPACITY | TURBINE (Quantity x Diameter) |
|--------------|---------------|---------------|----------------------------------|
| YLTK1 | 600 | 300 | 1X Ø 320 |
| YLTK2 | 900 | 750 | 2X Ø 320 |

Upon your request, machines of any size can be designed and manufactured

CONTINUOUS TYPE MACHINERY

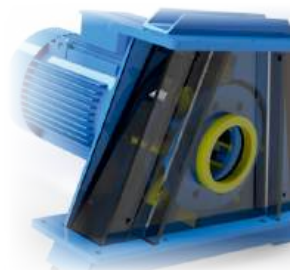


CONTINUOUS TYPE SHOT BLASTING MACHINE

| MACHINE CODE | TUNNEL ENTRANCE DIMENSIONS WxH (mm) | TURBINE (Quantity x Diameter) |
|--------------|-------------------------------------|-------------------------------|
| YKA1 | 1000 X 1000 | 6 X Ø 400 |
| YKA2 | 1000 X 1500 | 8 X Ø 400 |
| YKA3 | 1000 X 2000 | 10 X Ø 400 |

Upon your request, machines of any size can be designed and manufactured.

SPARE PARTS



SAND MIXERS



SAND MIXER

All kinds of sand mixers in the range of Ø80 - Ø200 cm are manufactured.



YILDIRIM
Shotblasting Machinery

www.yildirimkumlama.com
bilgi@yildirimkumlama.com
Fevzi Çakmak Mah. Asım cad. No:98/1A 42345 Karatay/ KONYA / TÜRKİYE
Phone:+90 332 251 61 41
Whatsapp:+90 552 503 2103